



Information about Penciltutor School

as required by Regulation 28 of the Private Education Act 2009



Name of the private education institution

PENCILTUTOR SCHOOL (ERF Registration Expiry: 02 Aug 2020)
Registration No. 200601708E

Addresses of registered premise of Penciltutor School

Block 102 #02-135 Yishun Avenue 5 Singapore (760102) (MAIN BRANCH)
Block 762 #02-256D Jurong West Street 75 Singapore (640762)

Accurate visual representation of the registered premise of



Number of classrooms in the registered premise of Penciltutor in	Yishun	Jurong
Classroom A	24 sqm	24.89 sqm
Classroom B	12 sqm	16.23 sqm
Classroom A	16 students	16 students
Classroom B	8 students	8 students



Facilities and equipment

We have educational toys, projector and speakers for a multimedia extravaganza. Our equipment include Beakers, Test-tubes, Conical Flasks, Measuring Cylinder, Burette, Pipette, Storage Bottles, Thermometers, Retort Stand, Stopwatch, Micrometer, Vernier Calipers, Ammeter, Voltmeter, Electronics set, D.C. Motor, Generator, Electric Bell, Microscopes, Prepared slides from United Kingdom and Petri dishes. We conduct practical lessons for Chemistry, Physics and Biology at our branches. Additional practical lessons for Chemistry, Physics and Biology are ONLY conducted for students enrolled in the FOUNDATION & INTEGRATED PROGRAMMES.

Managers of Penciltutor School

Anandarajan S/O Nagarajan
Vinothini D/O L. Krishnan

Members of the Academic Board of Penciltutor School

Name	Qualification	Institution
ANANDARAJAN S/O NAGARAJAN	B.Eng, MD, DIC, M.Sc	NANYANG TECHNOLOGICAL UNIVERSITY IMPERIAL COLLEGE LONDON
MEERA D/O SHANMUGAM	M.A	UNIVERSITY OF SHEFFIELD
S NAGARAJAN RAJAN	DACE, WSQ Specialist Diploma	SKILLSFUTURE SINGAPORE

Members of the Examination Board of Penciltutor School

Name	Qualification	Institution
ANANDARAJAN S/O NAGARAJAN	B.Eng, MD, DIC, M.Sc	NANYANG TECHNOLOGICAL UNIVERSITY IMPERIAL COLLEGE LONDON
MEERA D/O SHANMUGAM	M.A	UNIVERSITY OF SHEFFIELD
S NAGARAJAN RAJAN	DACE, WSQ Specialist Diploma	SKILLSFUTURE SINGAPORE



Organisation structure

Name	Qualification	Designation
ANANDARAJAN S/O NAGARAJAN	B.Eng, MD, DIC, M.Sc	Principal
MEERA D/O SHANMUGAM	M.A	Business Manager
S NAGARAJAN RAJAN	DACE, WSQ Specialist Diploma	Acad and Exam Board Member

The courses which Penciltutor School offers

PREPARATORY COURSE FOR SINGAPORE-CAMBRIDGE GENERAL CERTIFICATE OF EDUCATION (ORDINARY LEVEL) EXAMINATION

TUITION CLASSES* FOR SECONDARY 1, 2, 3 & 4

*Tuition classes are NOT registered with CPE.

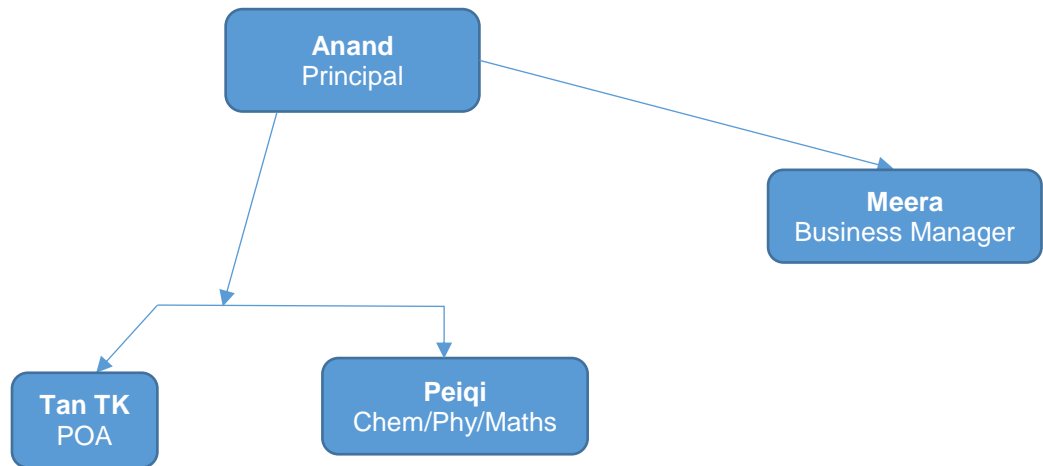


Teachers of Penciltutor School

Name	Qualification	Subjects	Remarks
Dr Ananda Rajan	(B.Eng) NTU (M.D.) UMF Cluj (DIC, M.Sc) Imperial College	Physics, Chemistry, Biology, E Maths & A Maths	Full-Time
Zhang Peiqi	((B.Soc.Sci (Hons)) NUS	Sc(Phy), Sc(Chem), Physics, Chemistry, E Maths & A Maths	Part-Time
Meera	(B.Mus) AMGD (M.A) University of Sheffield	English language, Sc(Bio), Sc(Chem), Biology, Chemistry, E Maths & A Maths	Full-Time
Tan Teck Khiang	(B.Bus) Edith Cowan University	POA	Part-Time



Teacher deployment chart



Information on the courses

- (i) All courses will be taught via face-to-face lectures
- (ii) The entry requirements for the Full-Time GCE O LEVEL classes are:
 - a) You must be a Singapore citizen or PR.
 - b) Minimum age of 15 on 1st January of the examination year.
 - c) must receive prior approval from Ministry of Education, Singapore (MOE). Penciltutor School will submit the application for enrolment to MOE on behalf of the candidate.
 - d) Obtained a pass in English and Mathematics at GCE N(T) level or Sec 3 N(A) level or Sec 2 (Express). It is compulsory for students who do not meet the above mentioned minimum academic qualification criteria to pass the PENCILTUTOR ADMISSION TEST. Those who fail this admission test will be enrolled into the Penciltutor Tuition Classes and will be required to re-sit the PENCILTUTOR ADMISSION TEST at a later date.



(iii) The entry requirements for the Tuition Classes are:

- a) You must be a Singapore citizen or PR.
- b) You must be enrolled in a Singapore Government school.

(iv) Examinations

The mid-year examinations will be held from 15 May 2018 till 28 May 2018. The preliminary examinations will be held from 4 September 2018 till 17 September 2018.

(v) Duration

The Full-Time GCE O LEVEL classes have a duration of 9 months and/or 12 months and are offered on a full-time basis. The Tuition classes have a duration of 12 months and are offered on a part-time basis.

(vi) Commencement & End Dates

The Full-Time GCE O LEVEL classes will commence on 13 NOV 2017 and end on 11 NOV 2018 (Tentative) for Integrated Programme. The Full-Time GCE O LEVEL classes will commence on 12 FEB 2018 and end on 11 NOV 2018 (Tentative) for Foundation and Standard Programmes. The Tuition classes will commence on 01 January 2018 and end on 31 December 2018.

(vii) Industrial Attachment

There will be no industrial attachment provided.



Fees & Teacher-Student Ratio

Course	No. of Subjects	Teacher-Student ratio	Fees (SGD)
Standard Program	3	1:16	\$3600
	4	1:16	\$3750
	5	1:16	\$3900
Foundation Program	3	1:8	\$7200
	4	1:8	\$7500
	5	1:8	\$7800
Integrated Program	3	1:8	\$9000
	4	1:8	\$9300
	5	1:8	\$9600

Course	No. of Subjects	Teacher-Student ratio	Fees (SGD)/4 weeks
Lower Sec Tuition	1	1:8	\$120
	2	1:8	\$220
	3	1:8	\$300

Course	No. of Subjects	Teacher-Student ratio	Fees (SGD)/4 weeks
Upper Sec Tuition	3	1:8	\$300
	4	1:8	\$360
	5	1:8	\$400

