



Information about Penciltutor School

as required by Regulation 28 of the Private Education Act 2009



Name of the private education institution

PENCILTUTOR SCHOOL (ERF Registration Expiry: 02 Aug 2018)
Registration No. 200601708E

Addresses of registered premise of Penciltutor School

Block 102 #02-135 Yishun Avenue 5 Singapore (760102) (MAIN BRANCH)
Block 762 #02-256D Jurong West Street 75 Singapore (640762)

Accurate visual representation of the registered premise of



| Number of classrooms in the registered premise of Penciltutor in | Yishun | Jurong |
|--|-------------|-------------|
| | | |
| Classroom A | 24 sqm | 24.89 sqm |
| Classroom B | 12 sqm | 16.23 sqm |
| | | |
| Classroom A | 16 students | 16 students |
| Classroom B | 8 students | 8 students |



Facilities and equipment

We have educational toys, projector and speakers for a multimedia extravaganza. Our equipment include Beakers, Test-tubes, Conical Flasks, Measuring Cylinder, Burette, Pipette, Storage Bottles, Thermometers, Retort Stand, Stopwatch, Micrometer, Vernier Calipers, Ammeter, Voltmeter, Electronics set, D.C. Motor, Generator, Electric Bell, Microscopes, Prepared slides from United Kingdom and Petri dishes. We conduct practical lessons for Chemistry, Physics and Biology at our branches. Additional practical lessons for Chemistry, Physics and Biology are ONLY conducted for students enrolled in the FOUNDATION & INTEGRATED PROGRAMMES.

Managers of Penciltutor School

Anandarajan S/O Nagarajan
Vinothini D/O L. Krishnan

Members of the Academic Board of Penciltutor School

| Name | Qualification | Institution |
|---|--|---|
| ANANDARAJAN S/O NAGARAJAN MEERA D/O SHANMUGAM TEO GERARD EMMANUEL | B.Eng, MD, DIC, M.Sc M.A (B.Arts (Eng)) | IMPERIAL COLLEGE LONDON UNIVERSITY OF SHEFFIELD NANYANG TECHNOLOGICAL UNIVERSITY |

Members of the Examination Board of Penciltutor School

| Name | Qualification | Institution |
|---|--|---|
| ANANDARAJAN S/O NAGARAJAN MEERA D/O SHANMUGAM TEO GERARD EMMANUEL | B.Eng, MD, DIC, M.Sc M.A (B.Arts (Eng)) | IMPERIAL COLLEGE LONDON UNIVERSITY OF SHEFFIELD NANYANG TECHNOLOGICAL UNIVERSITY |



Organisation structure

| Name | Qualification | Designation |
|---------------------------|----------------------|----------------------------|
| ANANDARAJAN S/O NAGARAJAN | B.Eng, MD, DIC, M.Sc | Principal |
| MEERA D/O SHANMUGAM | M.A | Business Manager |
| TEO GERARD EMMANUEL | (B.Arts (Eng)) | Acad and Exam Board Member |

The courses which Penciltutor School offers

PREPARATORY COURSE FOR SINGAPORE-CAMBRIDGE GENERAL CERTIFICATE OF EDUCATION (ORDINARY LEVEL) EXAMINATION

TUITION CLASSES* FOR SECONDARY 1, 2, 3 & 4

*Tuition classes are NOT registered with CPE.

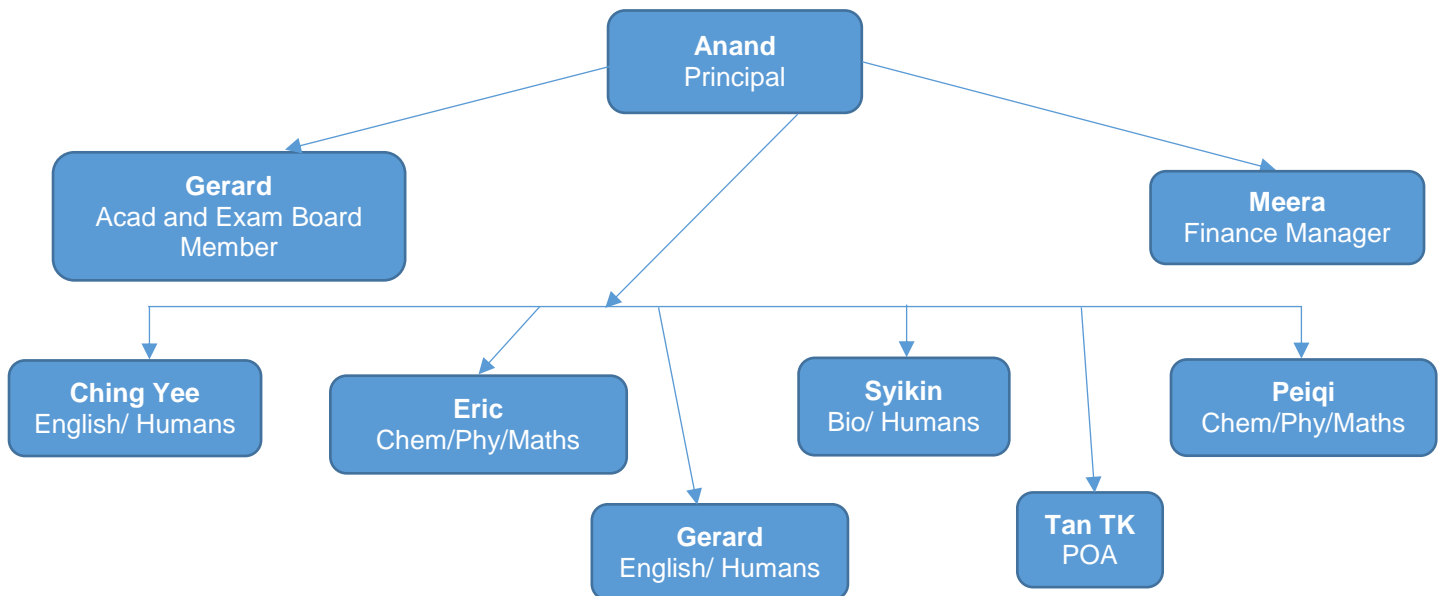


Teachers of Penciltutor School

| Name | Qualification | Subjects | Remarks |
|-----------------|--|---|-----------|
| Dr Ananda Rajan | (B.Eng) NTU (M.D.) UMF Cluj (DIC, M.Sc) Imperial College | Physics, Chemistry, Biology, E Maths & A Maths | Full-Time |
| Zhang Peiqi | ((B.Soc.Sci (Hons)) NUS | Sc(Phy), Sc(Chem), Physics, Chemistry, E Maths & A Maths | Part-Time |
| Meera | (B.Mus) AMGD (M.A) University of Sheffield | English language, Sc(Bio), Sc(Chem), Biology, Chemistry, E Maths & A Maths | Full-Time |
| Lim Ching Yee | (B.Arts (Hons))NUS | English language, Combined Humanities | Part-Time |
| Syikin | (B.Arts (Education)) NTU | English language, Combined Humanities, Sc(Chem), Chemistry, Sc(Bio), Biology | Part-Time |
| Eric | (B.Sci in Physics(Hons)) NTU | Sc(Phy), Sc(Chem), Physics, Chemistry, E Maths & A Maths | Full-Time |
| Gerard | (B.Arts (Eng))NTU | English language, Combined Humanities | Full-Time |
| Tan Teck Khiang | (B.Bus) Edith Cowan University | POA | Part-Time |



Teacher deployment chart



Information on the courses

- (i) All courses will be taught via face-to-face lectures
- (ii) The entry requirements for the Full-Time GCE O LEVEL classes are:
 - a) You must be a Singapore citizen or PR.
 - b) Minimum age of 15 on 1st January of the examination year.
 - c) must receive prior approval from Ministry of Education, Singapore (MOE). Penciltutor School will submit the application for enrolment to MOE on behalf of the candidate.
 - d) Obtained a pass in English and Mathematics at GCE N(T) level or Sec 3 N(A) level or Sec 2 (Express). It is compulsory for students who do not meet the above mentioned minimum academic qualification criteria to pass the PENCILTUTOR ADMISSION TEST. Those who fail this admission test will be enrolled into the Penciltutor Tuition Classes and will be required to re-sit the PENCILTUTOR ADMISSION TEST at a later date.



(iii) The entry requirements for the Tuition Classes are:

- a) You must be a Singapore citizen or PR.
- b) You must be enrolled in a Singapore Government school.

(iv) Examinations

The mid-year examinations will be held from 15 May 2018 till 28 May 2018. The preliminary examinations will be held from 4 September 2018 till 17 September 2018.

(v) Duration

The Full-Time GCE O LEVEL classes have a duration of 9 months and/or 12 months and are offered on a full-time basis. The Tuition classes have a duration of 12 months and are offered on a part-time basis.

(vi) Commencement & End Dates

The Full-Time GCE O LEVEL classes will commence on 13 NOV 2017 and end on 11 NOV 2018 (Tentative) for Integrated Programme. The Full-Time GCE O LEVEL classes will commence on 12 FEB 2018 and end on 11 NOV 2018 (Tentative) for Foundation and Standard Programmes. The Tuition classes will commence on 01 January 2018 and end on 31 December 2018.

(vii) Industrial Attachment

There will be no industrial attachment provided.

Fees & Teacher-Student Ratio

| Course | No. of Subjects | Teacher-Student ratio | Fees (SGD) |
|--------------------|-----------------|-----------------------|------------|
| Standard Program | 3 | 1:16 | \$3600 |
| | 4 | 1:16 | \$3750 |
| | 5 | 1:16 | \$3900 |
| Foundation Program | 3 | 1:8 | \$7200 |
| | 4 | 1:8 | \$7500 |
| | 5 | 1:8 | \$7800 |



| | | | |
|--------------------|---|-----|--------|
| | | | |
| Integrated Program | 3 | 1:8 | \$9000 |
| | 4 | 1:8 | \$9300 |
| | 5 | 1:8 | \$9600 |
| | | | |

| Course | No. of Subjects | Teacher-Student ratio | Fees (SGD)/4 weeks |
|-------------------|-----------------|-----------------------|--------------------|
| Lower Sec Tuition | 1 | 1:8 | \$120 |
| | 2 | 1:8 | \$220 |
| | 3 | 1:8 | \$300 |

| Course | No. of Subjects | Teacher-Student ratio | Fees (SGD)/4 weeks |
|-------------------|-----------------|-----------------------|--------------------|
| Upper Sec Tuition | 3 | 1:8 | \$300 |
| | 4 | 1:8 | \$360 |
| | 5 | 1:8 | \$400 |

